

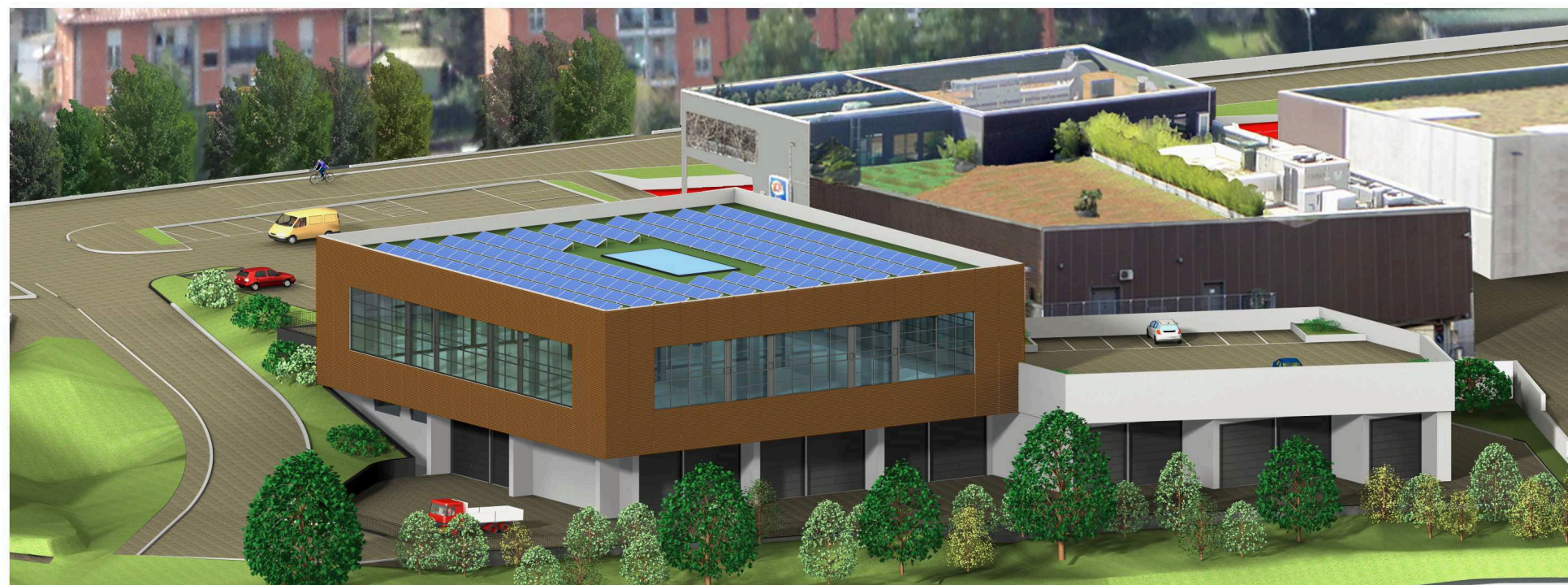


Gruppo **Tironi**

*Garanzia di qualità
e professionalità*

**NUOVO COMPLESSO
POLIFUNZIONALE**

Via Meer, Alzano Lombardo



*Attività industriali,
artigianali, box da camper,
commerciale, terziario e varie.*

Tel: 035.512202 • www.gruppotironi.com

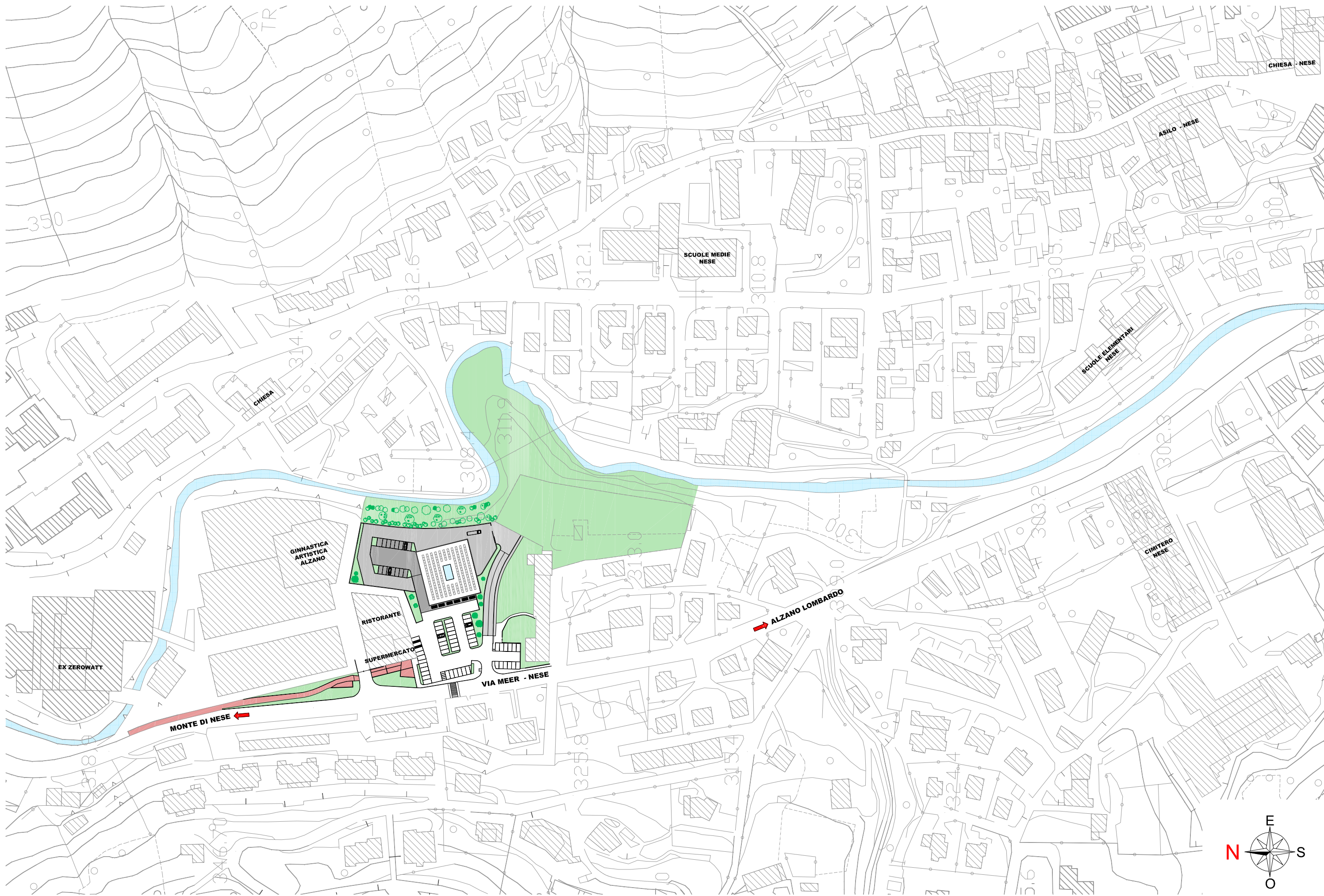


TAVOLA INQUADRAMENTO scala 1:2000



PLANIMETRIA GENERALE scala 1:500



PIANTA PIANO TERRA scala 1:300



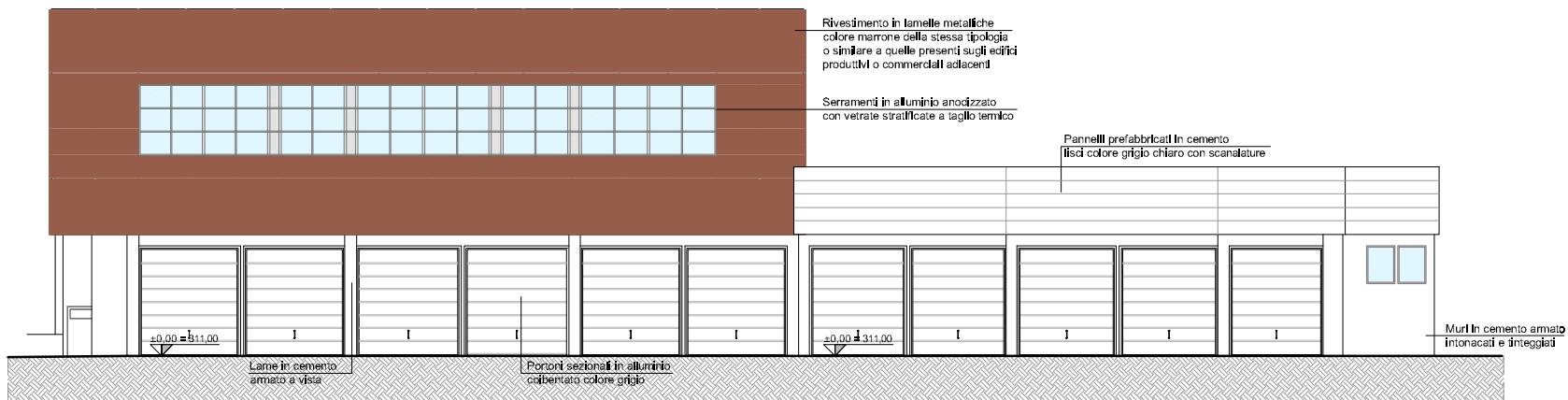
**PIANTA PIANO PRIMO con destinazione produttiva
scala 1:300**

- 9 Area artigianale = 985,60 mq.
- Portico = 73,50 mq.
- Area esterna 1 = 267,60 mq.
- Area esterna 2 = 741,60 mq.

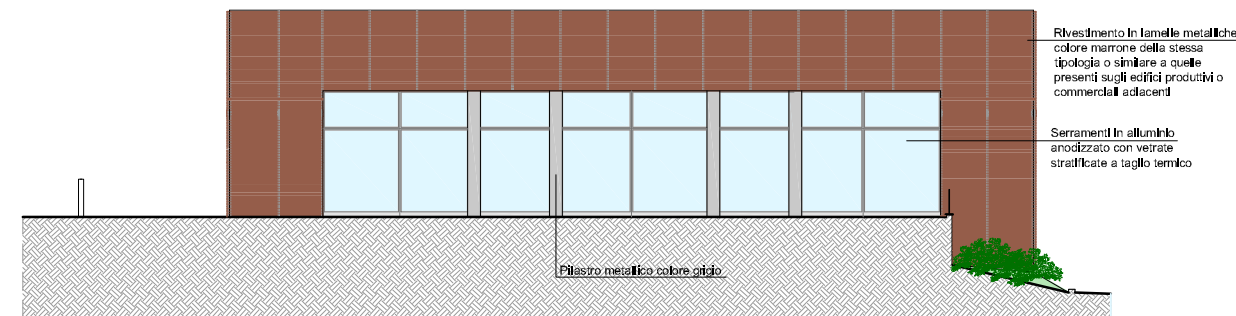


**PIANTA PIANO PRIMO con destinazione commerciale
scala 1:300**

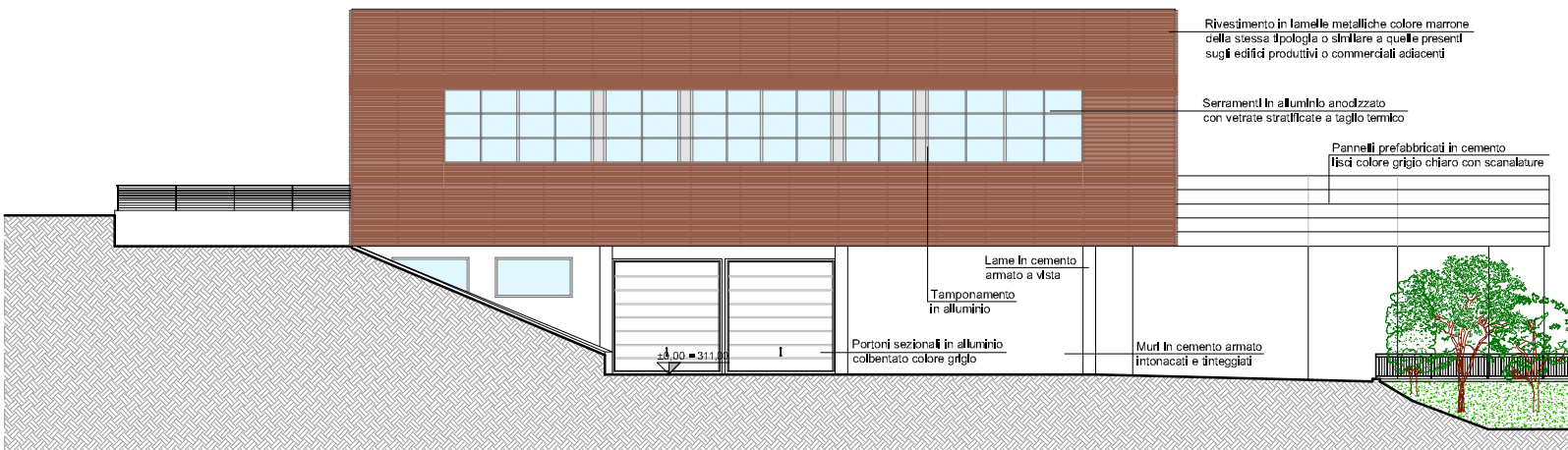
9 Area commerciale = 985,60 mq.
 Portico = 73,50 mq.
 Area esterna = 267,60 mq.



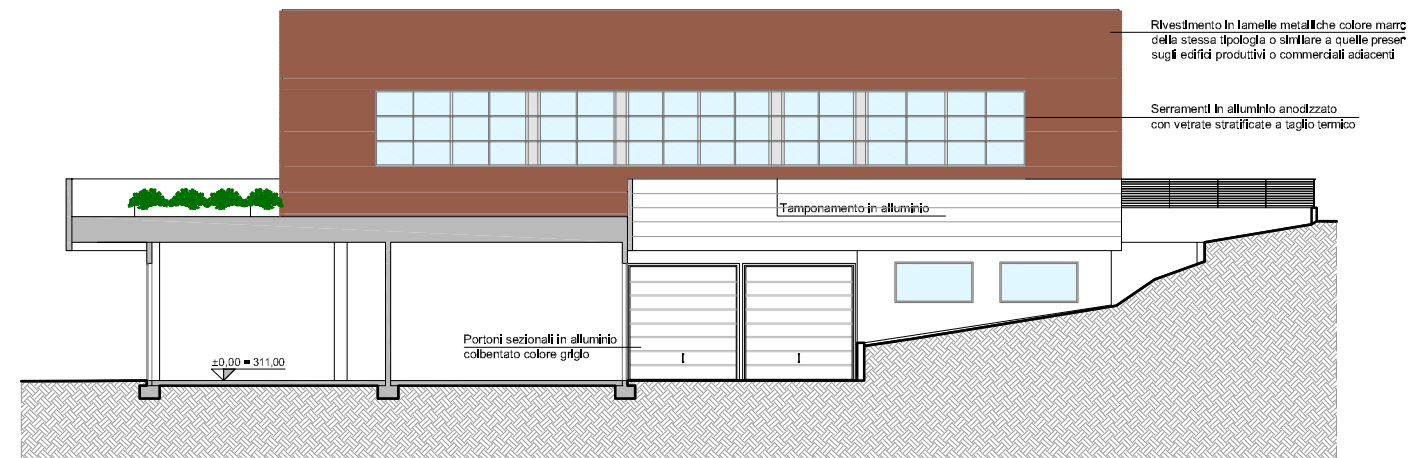
PROSPETTO EST scala 1:300



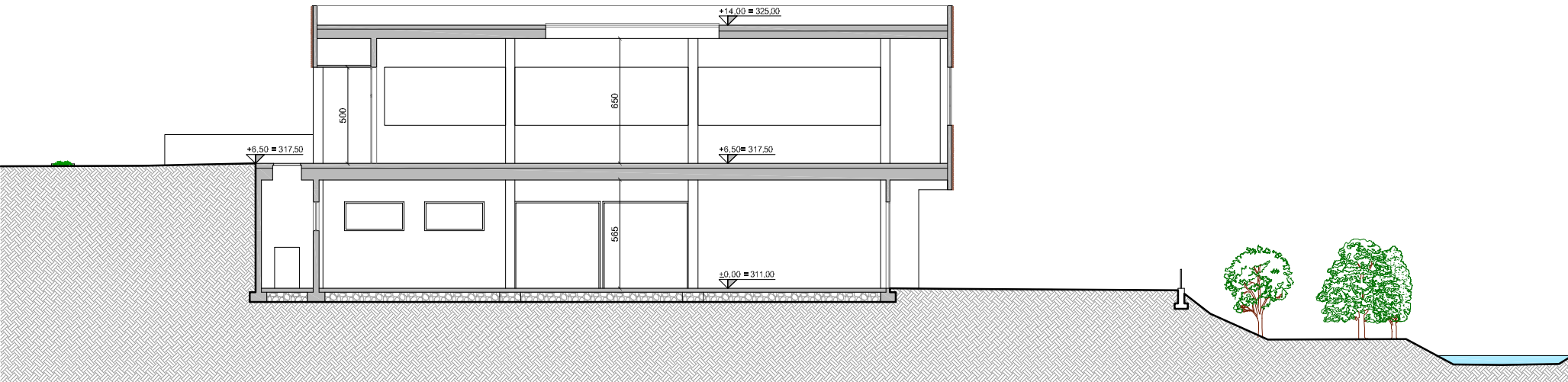
PROSPETTO OVEST scala 1:300



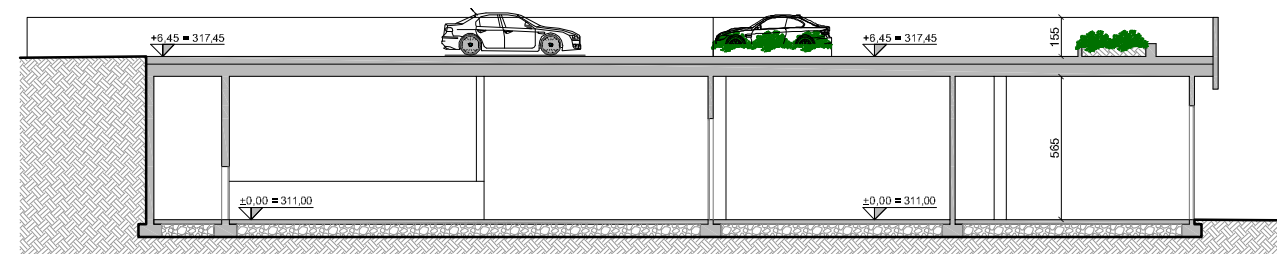
PROSPETTO SUD scala 1:300



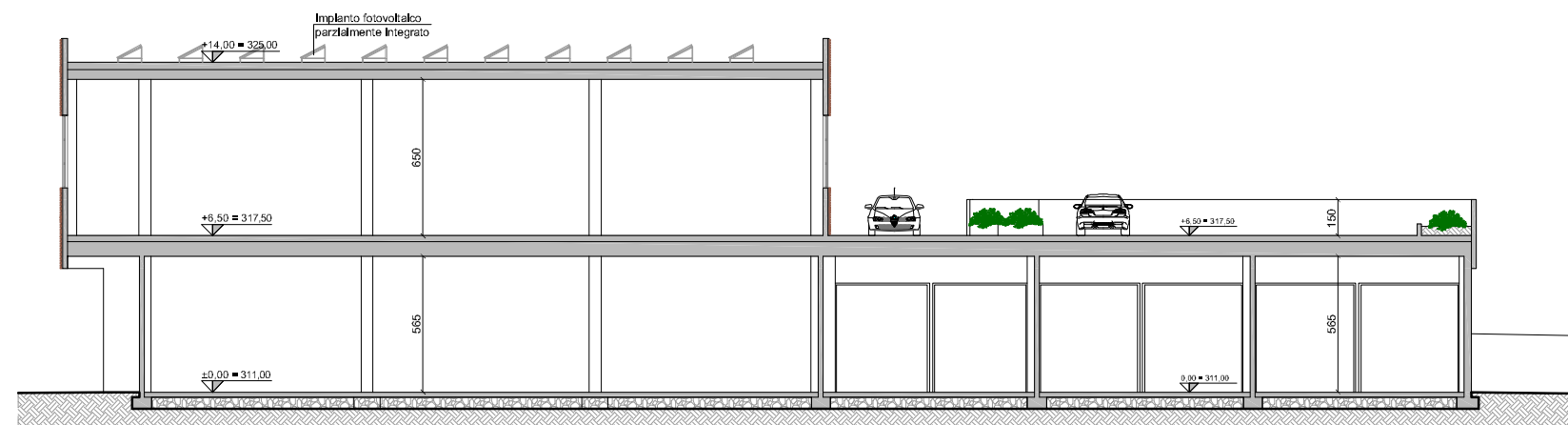
PROSPETTO NORD scala 1:300



SEZIONE A:A scala 1:300



SEZIONE B:B scala 1:300



SEZIONE C:C scala 1:300